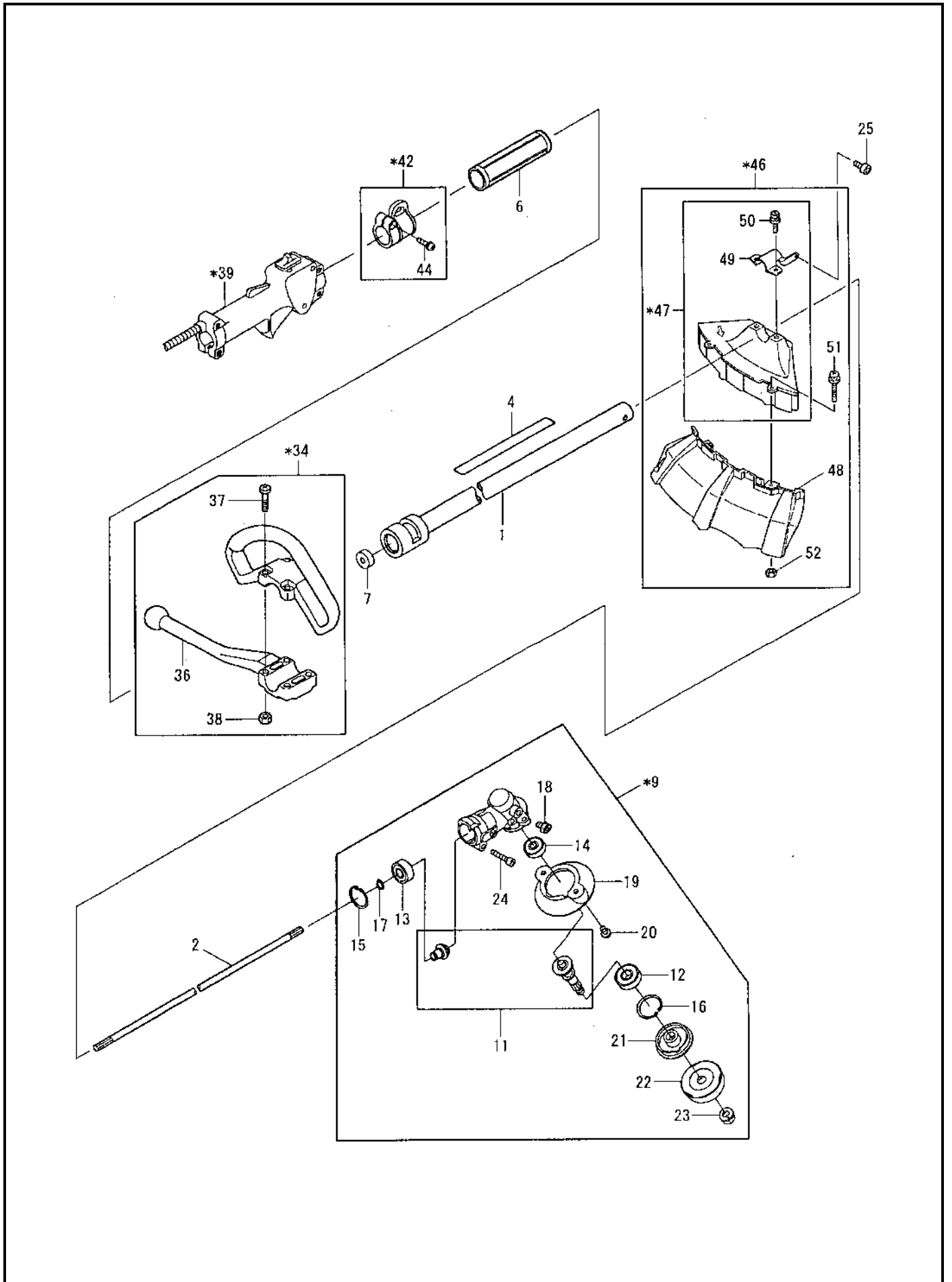


PARTS CATALOG

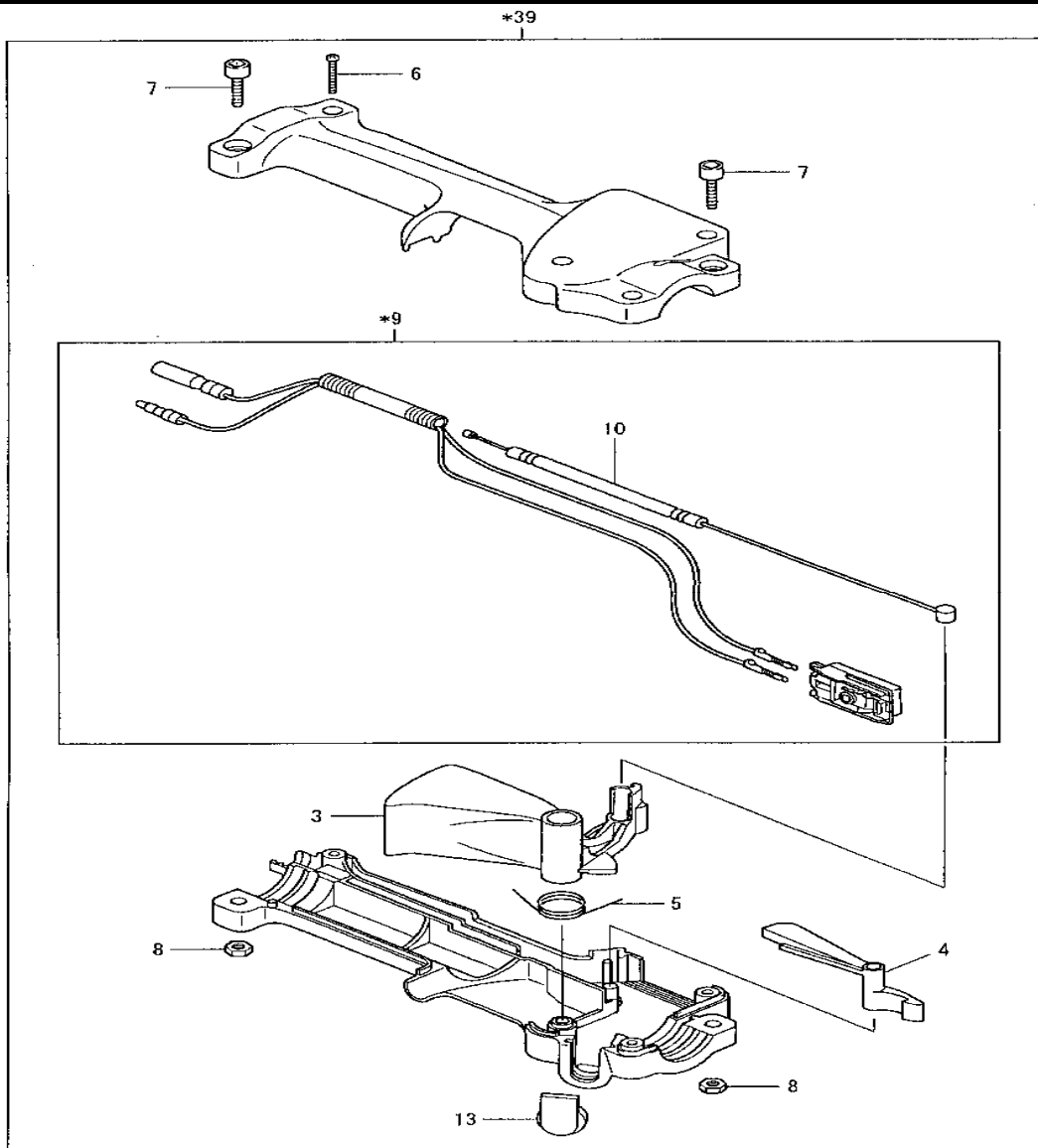
Model ELAN2200P

MACHINE BODY,
CONTROL LEVER ASSY,
ENGINE BODY,
CARBURETOR & AIR CLEANER,
STANDARD ACCESSORY ,

MACHINE BODY

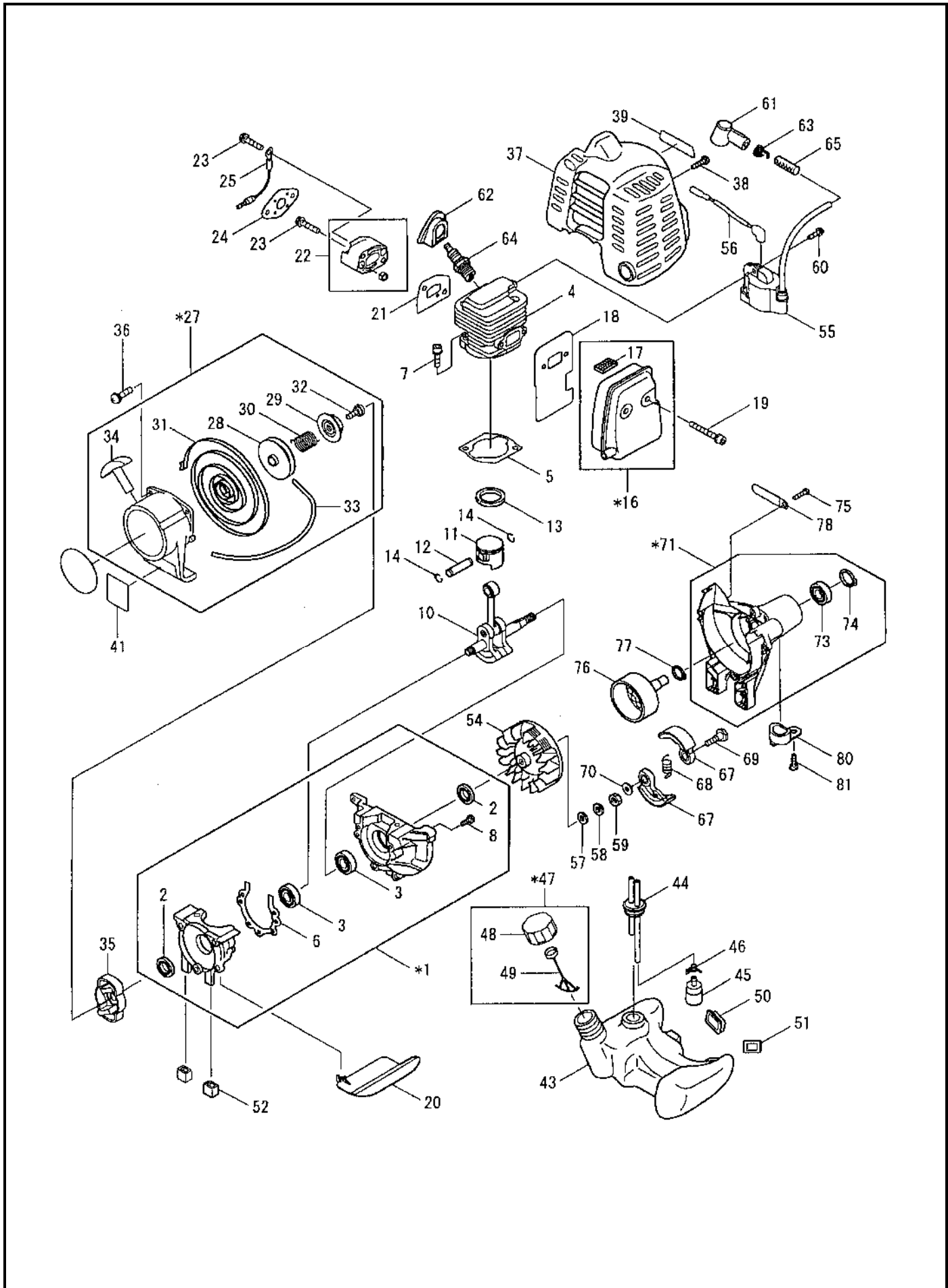


MACHINE BODY



KEY NO.	PART NO.		DESCRIPTION	Q'TY	REMARKS
				A	
3	6195006030	C	LEVER	1	INCL.1-9
4	6215023060	C	LEVER	1	
5	6195006050	C	SPRING	1	
6	6195006060	C	TAPPING SCREW	4	4 × 20
7	0119059720	C	SOCKET HEAD BOLT	2	M5 × 20
8	6415011160	C	NUT	2	M5
*9	6195021010	C	WIRE SET	1	INCL.10
10	6195021020	B	CONTROL CABLE	1	
13	6195006150	C	TOP	1	
*39	6195021000	C	CONTROL LEVER ASSY	1	INCL.3~13

ENGINE BODY



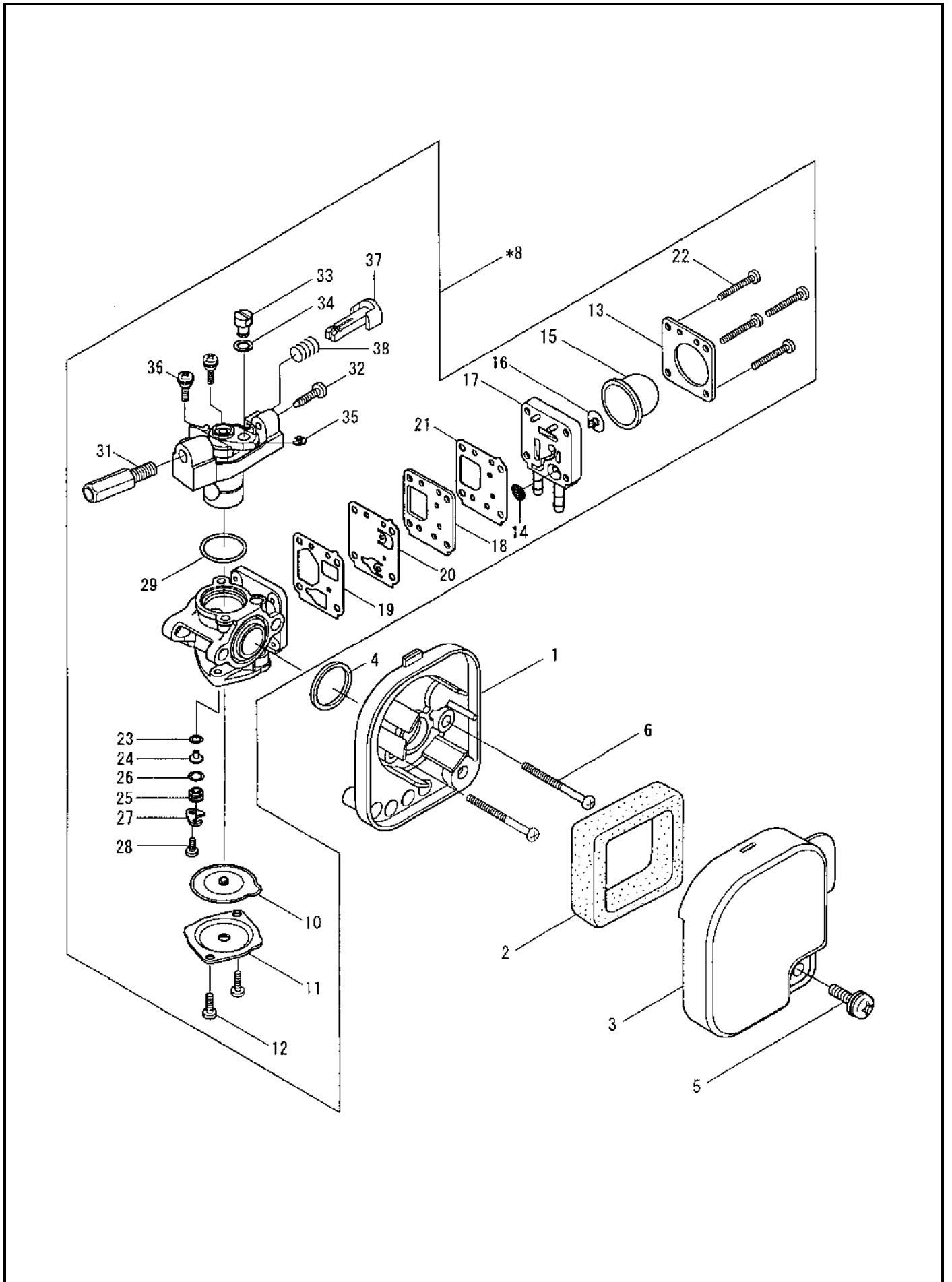
ENGINE BODY

KEY NO.	PART NO.		DESCRIPTION	Q'TY	REMARKS
*1	5191004001	C	CRANKCASE ASSY	1	INCL.2,3,6,8
2	0044019980	C	OIL SEAL	2	
3	0600109980	C	BALL BEARING	2	#6000
4	5191500901	C	CYLINDER	1	
5	5191500301	A	GASKET CYLINDER	1	
6	5191500400	A	GASKET CRANKCASE	1	
7	0119059730	C	SCREW	2	M5X20 W SW
8	0140059520	C	SCREW	3	M5X25 SW
10	5192005001	C	CRANKSHAFT COMPL	1	
11	5192501701	C	PISTON	1	
12	5192500500	C	PIN PISTON	1	
13	5212500500	C	RING PISTON	1	
14	0565089970	C	CLIP	2	
*16	5193001002-1	C	MAFFLER EXHAUST	1	INCL.17
17	5193001050	B	SPARK ARRESTER	1	
18	5193500002	A	GASKET MAFFLER	1	
19	0119059520	C	SOCKET HEAD BOLT	2	M5 × 40 W
20	5193500101	C	PLATE ,MUFFLER	1	
21	5193500500	A	GASKET INSULATOR	1	
22	5233014000-2	C	INSULATOR COMPL	1	
23	0140059500	C	SCREW	2	M5 × 25 W,SW
24	5103502801	A	GASKET, AIR CLEANER	1	
25	6165500201	C	WIRE	1	
*27	5195017000	C	STARTER, REWND	1	INCL.28~34
28	5195019010	C	REEL	1	
29	5195019020	C	CAM PLATE	1	
30	5195019030	C	DAMPER SPRING	1	
31	5215002030	C	SPIRAL SPRING	1	
32	5195002060	C	SET SCREW	1	
33	5105015130	C	STARTER ROPE	1	
34	5225004020	C	STARTER KNOB	1	
35	5195018000	C	PULLEY	1	
36	0140049770	C	SCREW ASSY	3	M4 × 16 W,SW
37	5195502001	C	COVER, CYLINDER	1	
38	0150059790	C	TAPPING SCREW	1	φ 5 × 14
39	5219500701	C	LABEL ,TRADE MARK	1	
41	0736309940	C	LABEL ,SOUND LEVEL	1	

ENGINE BODY

KEY NO.	PART NO.		DESCRIPTION	Q'TY	REMARKS
43	5196500003-1	C	TANK ,FUEL	1	
44	0851155920	A	TUBE	1	
45	5236503900	A	FILTER	1	
46	0561059990	C	HOSE CLAMP	1	
*47	5256059000	B	CAP FUEL TANK ASSY	1	INCL.48,49
48	5256058000	B	CAP FUEL TANK ASSY	1	
49	5256067000	B	STRAP ASSY	1	
50	5036500200-1	A	PLATE	1	
51	5036500300-1	A	PLATE	1	
52	5216500200	A	DAMPER	2	
54	5197016010	C	FLYWHEEL	1	
55	5197011010	B	COIL ,IGNITION	1	
56	5197018000	C	WIRE COMPL	1	
57	0031008000	C	WASHER	1	
58	0032008000	C	SPRING WASHER	1	
59	0022808000	C	NUT	1	M8
60	0140049770	C	SCREW ASSY	2	M4X16 W SW
61	0655009870-1	A	CAP,PLUG	1	
62	5197500100	B	COVER ,PLUG CAP	1	
63	0654009931	A	SPRING, PLIG CAP	1	
64	0650149661	A	OLUG SPARK	1	
65	0851119930	B	TUBE	1	
67	5928500000	B	SHOE ,CLUTCH	2	
68	5928500100	B	SPRING	1	
69	5928500200	B	BOLT, CLUTCH	2	
70	5928500300	B	WASHER	2	
*71	6191052000	C	CASE ,CLUTCH ASSY	1	INCL.73,74
73	0600109940	C	BALL BEARING	1	#6000ZZ
74	0031426000	C	SNAPRING, INNER	1	φ 26
75	0150059780	C	TAPPING, INNER	3	φ 5 × 20
76	6192004000	C	DRUM, CLUTCH COMPL	1	
77	0031510000	C	SNAPRING, OUTER	1	φ 10
78	0566059980	C	CLAMP	1	
80	6191501602	C	STOPPER	1	
81	0150059770	C	TAPPING SCREW	1	φ 5 × 20

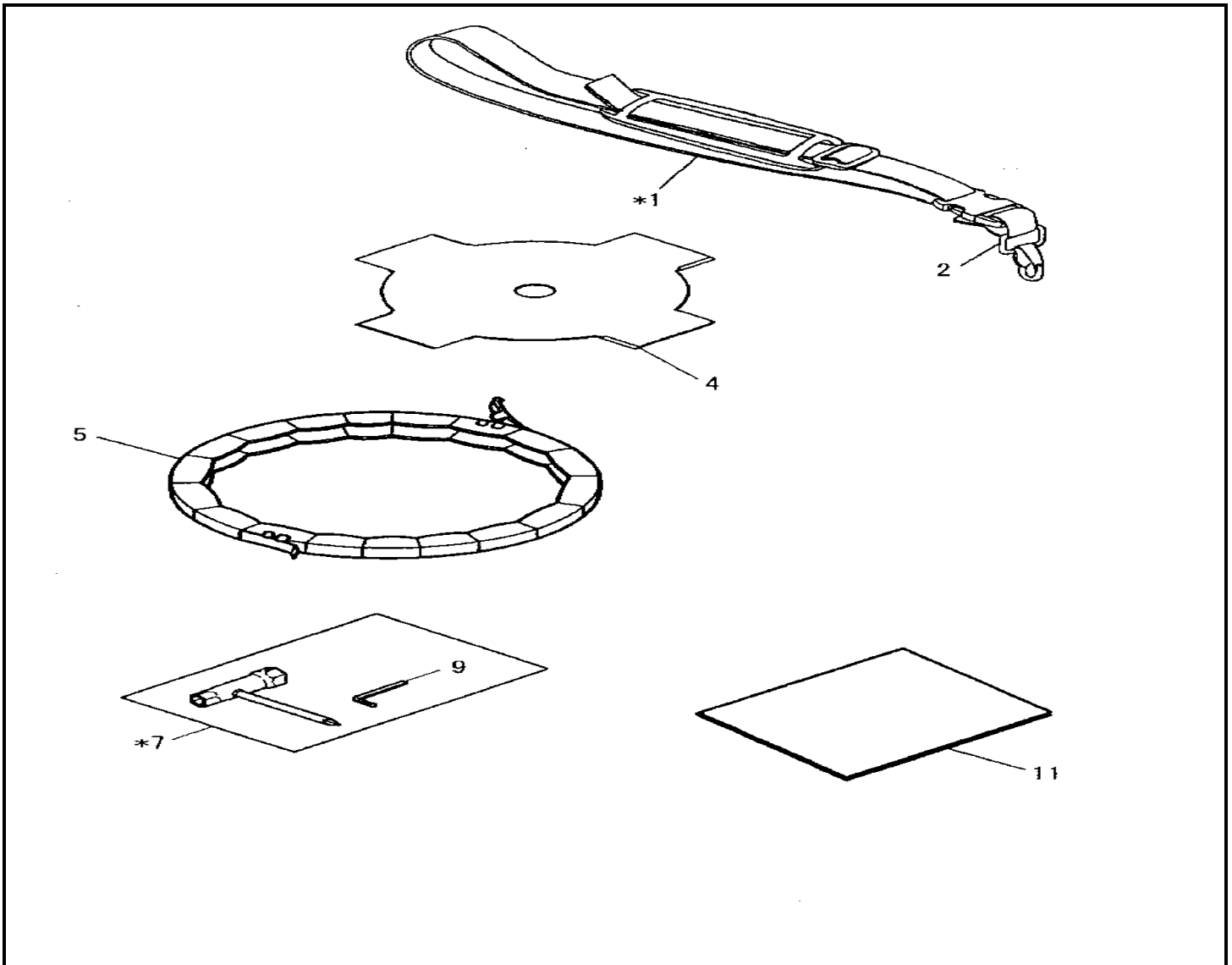
CARBURETOR & AIR CLEANER



CARBURETOR & AIR CLEANER

KEY NO.	PART NO.		DESCRIPTION	Q'TY	REMARKS
1	5193018010	B	PLATE ,AIR CLEANER	1	
2	5193017030	A	ELEMENT ,AIR CLEANER	1	
3	5193018020	B	CASE ,AIR CLEANER	1	
4	0240159990	A	O-RING	1	
5	0140059480	C	SCREW ASSY	1	M5 × 14 W,SW
6	0043105600	C	SCREW, PAN HEAD	2	
*8	5196020000	B	CARBURETOR	1	INCL.10~38
10	5196019040	A	DAIAPHRAGM ASSY	1	
11	5196019050	C	DAIAPHRAGM COVER	1	
12	5196019060	C	SCREW	2	
13	5196019320	C	PRIMING PUMP PLATE	1	
14	5196019330	C	FILTER	1	
15	5246009040	C	PRIMING PUMP	1	
16	5246009030	C	COMBINATION VALVE	1	
17	5196019340	C	PUMP COVER	1	
18	5196019350	C	PUMP PLATE	1	
19	5196019110	C	PUMP PACKING	1	
20	5196019120	C	PUMP DAIRHAGM	1	
21	5196019130	C	PUMP PACKING	1	
22	5196019140	C	SCREW	4	
23	5196019150	A	O-RING	1	
24	5196019160	A	MAIN JET	1	
25	5196019360	A	CHECK VALVE ASSY	1	
26	5196019410	A	O-RING	1	
27	5196019420	B	GUAIDE PLATE	1	
28	5196019430	C	SCREW	1	
29	5196019220	A	O-RING	1	
31	5196019240	C	ADJUST SCREW	1	
32	5196019250	C	SLOW STOP SCREW	1	
33	5196019450	C	LEVER END	1	
34	5196019460	C	WASHER	1	
35	5196019510	C	E-RING	1	
36	5196019310	C	SCREW	2	
37	5196036010	C	STARTER LEVER	1	
38	5196036020	C	STARTER SPRING	1	

STANDARD ACCESSORY



KEY NO.	PART NO.	DESCRIPTION	Q'TY	REMARKS
*1	6197003002	BAND ASSY	1	INCL.2
2	6197003012	HOOK COMPL	1	
	6218020001-1	NYLON HEAD	1	BUMP & FEED
4	6258507600	CUTTER	1	
5	6418500701	COVER, CUTTER	1	
	6029015000	PROTECTOR (GOGGLE)	1	
*7	6119019001	TOOL	1	INCL.9
9	0717049990	WRENCH SOCKET HEAD	1	M5
10	6199522001	INSTRUCTION MANUAL	1	